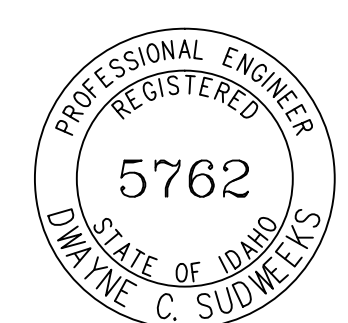


PLAN NOTES:

- 1 CAP WATER LINE AND REMOVE EXISTING HOSE BIBB ON WALL.
- 2 REMOVE EXISTING DRINKING FOUNTAIN ON WALL AND RELOCATE TO LOCATION AS SHOWN. MODIFY EXISTING WASTE, WATER AND VENT PIPING AS REQUIRED.
- 3 REMOVE EXISTING JANITOR SINK AND CAP WASTE, WATER AND VENT PIPING AS REQUIRED.
- 4 EXISTING PLUMBING FIXTURES TO REMAIN. PROTECT DURING CONSTRUCTION.
- 5 EXISTING WATER HEATERS TO REMAIN. PROTECT DURING CONSTRUCTION.
- 6 CONNECT NEW 3" WASTE LINE TO EXISTING 3" OR LARGER WASTE LINE. FIELD VERIFY EXISTING LOCATION OF WASTE PIPING.
- 7 CONNECT NEW 4" WASTE LINE TO EXISTING 4" OR LARGER WASTE LINE. FIELD VERIFY EXISTING LOCATION OF WASTE PIPING.
- 8 CONNECT NEW 1-1/4" GAS LINE TO EXISTING GAS LINE AT METER DOWNSTREAM OF PRESSURE REGULATOR. DROP UNDERGROUND AND RUN TO NEW JAN. ROOM AS SHOWN. RISE UP IN STUD SPACE OF WALL AND FEED NEW FURNACES AND FIRE PLACE AS SHOWN ON PLAN.
- 9 DROP 3/4" GAS LINE DOWN AND CONNECT TO FURNACE COMPLETE WITH SHUT-OFF VALVE, DIRT LEG AND FLEXIBLE CONNECTION. SEE DETAIL ON SHEET P200.
- 10 DROP 3/4" GAS LINE DOWN AND CONNECT TO GAS FIREPLACE COMPLETE WITH SHUT-OFF VALVE, DIRT LEG AND FLEXIBLE CONNECTION. SEE DETAIL ON SHEET P200.
- 11 DROP 1/2" CW & 1/2" PEX PIPING UNDERSLAB TO FEED ISLAND CAFE PLUMBING EQUIPMENT. RISE BACK UP THRU SLAB INTO CABINET TO SERVE ICE MAKER, ESPRESSO MACHINE, AND SIDE SPRAY RISER. SEE PLUMBING SCHEDULE. ALL WATER PIPING UNDERSLAB TO BE INSULATED WITH 3/4" THICK ARMAFLEX PIPE INSULATION AND NO JOINTS ALLOWED UNDERSLAB.
- 12 RUN 3/4" CONDENSATE DRAIN LINE FROM FURNACE AND DX COOLING COIL TO FLOOR DRAIN COMPLETE WITH DOWNTURNED 90° ELBOW AND AIR GAP.
- 13 DROP 3/4" CW & HW PEX PIPING UNDERSLAB TO FEED NEW ADDITION PLUMBING FIXTURES. ALL WATER PIPING UNDERSLAB TO BE INSULATED WITH 3/4" THICK ARMAFLEX PIPE INSULATION AND NO JOINTS ALLOWED UNDERSLAB.
- 14 DROP 3/4" CD DOWN EXPOSED ON WALL OF MECH. ROOM AND RUN TO FLOOR DRAIN AS SHOWN COMPLETE WITH 90° ELBOW AND AIR GAP.
- 15 RUN PUMPED 3/4" CONDENSATE DRAIN LINE IN JOIST SPACE TO WALL ABOVE SINK. DROP IN WALL AND CONNECT TO SINK SIDE OF P-TRAP USING DISHWASHER CONNECTION.
- 16 CONNECT NEW 3/4" CW TO EXISTING 3/4" OR LARGER CW LINE LOCATED ABOVE CEILING OF TOILET ROOMS. FIELD VERIFY EXISTING LOCATION OF WATER PIPING.
- 17 CONNECT NEW 3/4" HW PIPING TO EXISTING 3/4" OR LARGER HW WATER PIPING LOCATED IN STORAGE CLOSET IS NEXT TO EXISTING WATER HEATERS.
- 18 CONNECT NEW 1/2" CW LINE TO EXISTING 1/2" OR LARGER CW LINE LOCATED ABOVE CEILING OF KITCHEN AREA. FIELD VERIFY EXISTING LOCATION.
- 19 DROP 1/2" CW LINE DOWN IN WALL AND RUN UNDER PLATFORM AND CONNECT TO OWNER PROVIDED BAPTISTRY. PROVIDE BALL TYPE SHUT-OFF VALVE IN WALL COMPLETE WITH HINGED LOCKABLE ACCESS PANEL.
- 20 PLUMBING CONTRACTOR TO CONNECT 2" WASTE AND VENT PIPING TO BAPTISTRY AS PER MANUFACTURER'S INSTRUCTIONS COMPLETE WITH 2" DEEP SEAL P-TRAP.
- 21 CONNECT NEW 2" WASTE TO EXISTING 3" OR LARGER WASTE LINE. FIELD VERIFY EXISTING LOCATION.

PLUMBING LEGEND	
SYMBOL	DESCRIPTION
V	VENT
VTR	VENT THRU ROOF
CO	CLEANOUT
WCO	WALL CLEANOUT
COTG	CLEANOUT TO GRADE
—	PIPE DROP
—	PIPE RISE
—	BALL TYPE ISOLATION VALVE
---	SOIL OR WASTE PIPING
---	VENT LINE PIPING
---	DOMESTIC SOFT COLD WATER
---	DOMESTIC HOT WATER PIPING

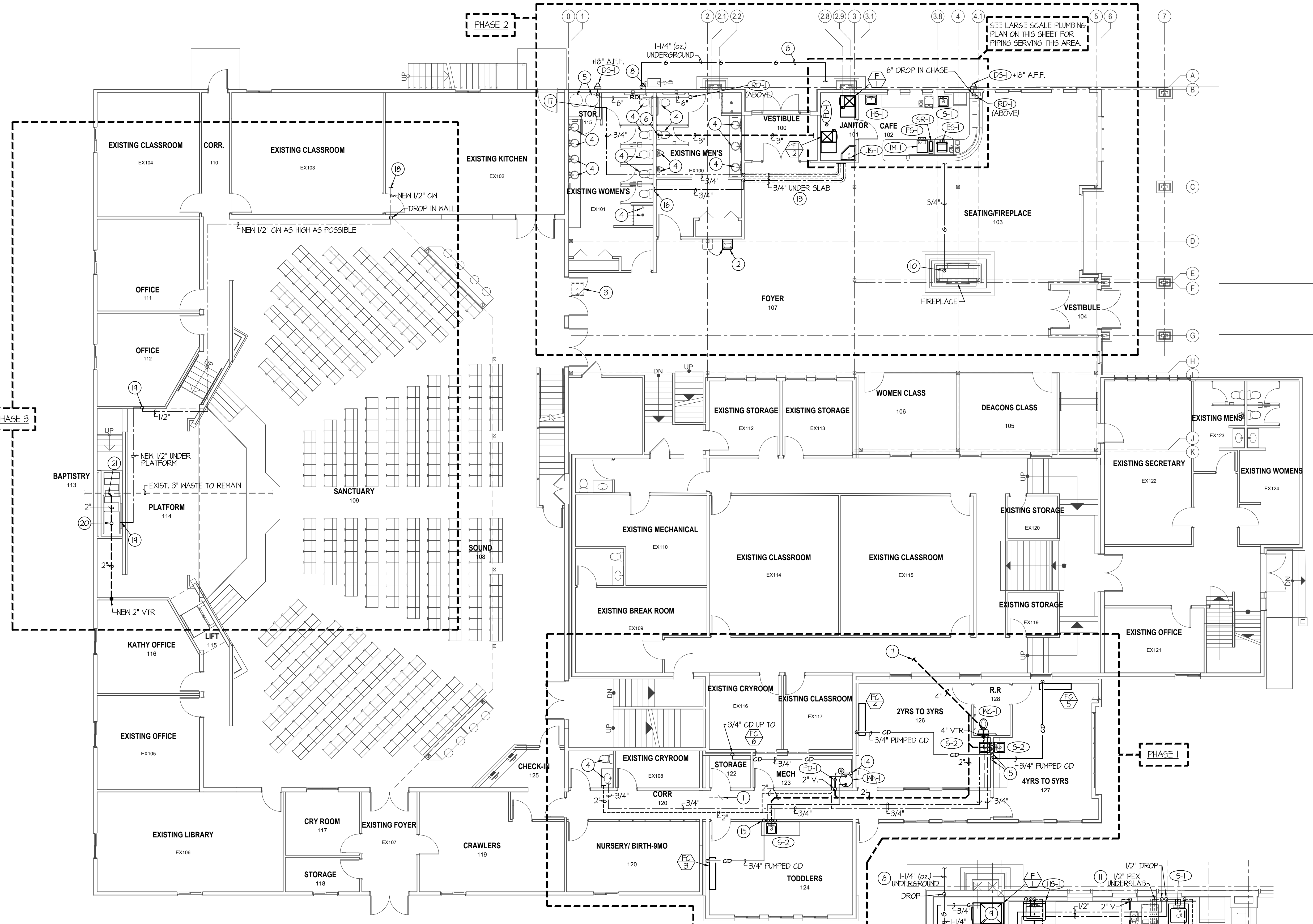

Engineered Systems Associates
 1355 EAST CENTER
 POCATELLO, IDAHO 83201
 PHONE: (208) 233-0501
 FAX: (208) 233-0529
 EMAIL: esa@engsystems.com
 ESA JOB NUMBER: 18060



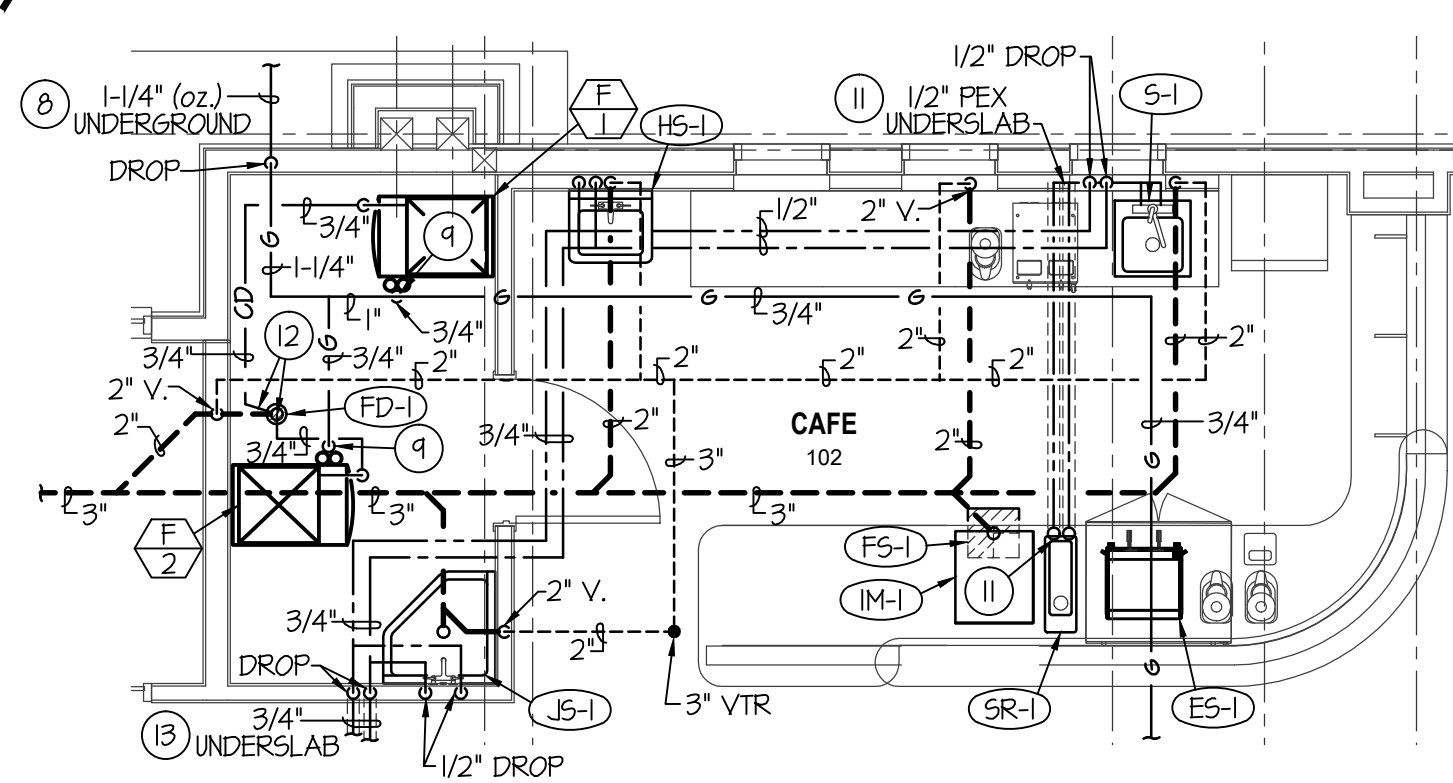
REV	DATE	DESCRIPTION

PROJECT: **NEW ADDITION FOR NEW PLYMOUTH FIRST BAPTIST CHURCH**
 204 East Elm Street
 New Plymouth, ID 83655
 MOUNTAIN WEST ARCHITECTS | 543 25TH ST. - OBERLIN, UT 84001 | PH: 801-388-6052 | www.mountainwestarchitects.com

SHEET TITLE: **MAIN LEVEL PLUMBING FLOOR PLAN**
 SHEET NUMBER: **P101**
 DO NOT SCALE DRAWING



MAIN LEVEL - PLUMBING PLAN
SCALE: 1/8" = 1'-0"



LARGE SCALE CAFE 102 AREA PLUMBING PLAN
SCALE: 1/4" = 1'-0"

PHASE 3

PHASE 2

PHASE 1

